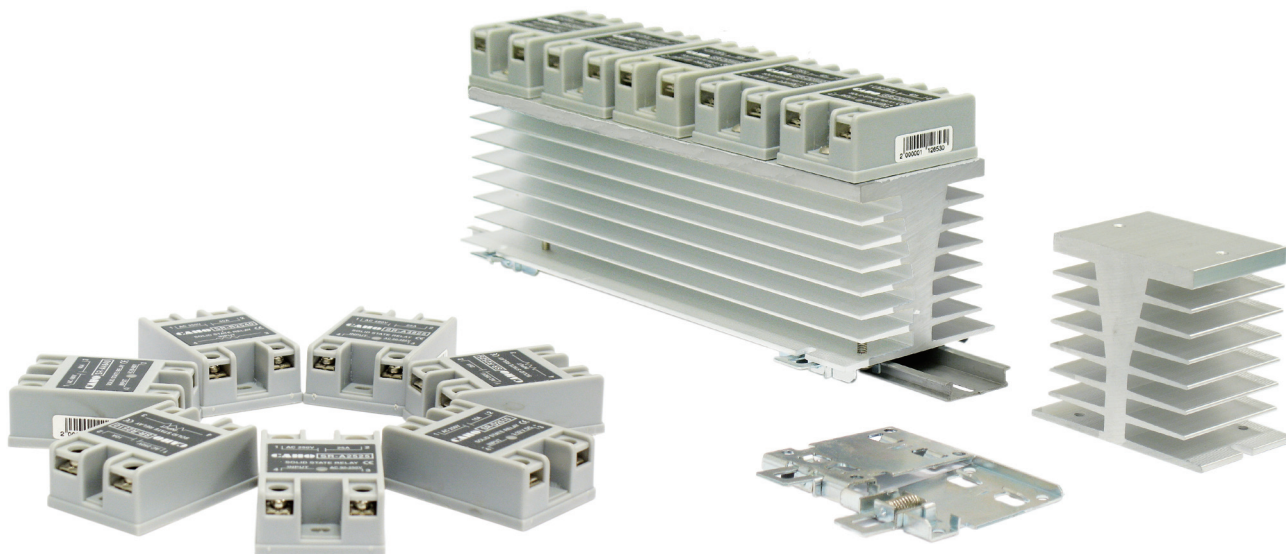




Solid State Relay (1 Phase with SCR unit)

1 ϕ (10~60A)固態繼電器



Features

1. Load current ranges from 10 to 60 Amps.
2. Internally mounted snubber circuit protection from huge current (dv/dt) application.
3. Zero Crossing turn-on, Zero current turn-off.
4. With LED display to detect the operation condition of devices.
5. Photo-isolation, 4000V Rms isolation.
6. R SERIES have output power 0~90%
7. Ambient Temperature: -10 °C~55 °C, below 90% humidity
8. Weight: 70g

特性

1. 負載額定電流 10A~60A
2. 內部提供RC電路防止突波產生
3. 零電位導通
4. 使用LED顯示觸發狀態
5. 採光耦合隔離 4000V Rms
6. R系列輸出範圍可調0~90%
7. 環境溫度: 濕度低於90%, 常溫介於零下10至55度
8. 重量: 70 公克

SPECIFICATIONS 規格說明

(Ta=25°C)

Model No. 型號	SR-D38□□ SR-D48□□	SR-A38□□ SR-A48□□	SR-U24□□ SR-U48□□	SR-R25□□ SR-R38□□ SR-R48□□
Data 項目				
Type 型式	(DC-AC)	(AC-AC)	(DC-AC) (AC-AC)	(VR-AC)
Input Signal Voltage 輸入電壓	DC 3~32V	AC 90~250V	DC/AC 5~32V	VR B250KΩ VR B500KΩ VR B500KΩ
Output Load Voltage Range 輸出負載電壓範圍	AC 24~380V AC 380~440V	AC 24~380V AC 380~440V	AC 24~380V AC 380~440V	AC 90~220V AC 220~380V AC 380~440V
Load Current 負載電流	10A 25A 40A 60A	10A 25A 40A	10A 25A 40A	10A 25A 40A
Max. 1 Cycle Surge Current 1 週期內最大湧浪電流	125A 260A 315A 350A	125A 260A 315A	125A 260A 315A	125A 260A 315A
Max. On State Voltage Drop 開啟後最大壓降	AC 1.6V			
Response Time 響應時間	1/2 cycle + 1 msec.	3/2 cycle + 1 msec.	3/2 cycle + 1 msec.	
Dielectric Strength 絕緣性	10 ⁸ ohms	10 ⁸ ohms	10 ⁸ ohms	
Isolation between Input/Output 輸入/輸出隔離電壓	2500V (RMS)	2500V (RMS)	2500V (RMS)	
Isolation Input/Output to Case 輸入/輸出對外殼之隔離電壓	2500V (RMS)	2500V (RMS)	2500V (RMS)	
Capacitance 雜扇電容	15 pf (Max.)	15 pf (Max.)	15 pf (Max.)	
Operating Temperature 使用溫度	-20°C~80°C	-20°C~80°C	-20°C~80°C	
Storage Temperature 保存溫度	-40°C~80°C	-40°C~80°C	-40°C~80°C	
Weight(approx.) 重量(估計)	70g			