

ISO 9001:2008 and ISO 14001:2004 certificated



BAOSHENG INDUSTRIAL



- 保勝工業有限公司
BAOSHENG INDUSTRIAL CO., LTD.
No. 16, Taitzu 5th St., Jente, Tainan, Taiwan
TEL: +886-6-2728654
FAX: +886-6-2728653

- 东莞保胜五金塑胶制品有限公司
DONGGUAN BAOSHENG HARDWARE & PLASTIC PRODUCTS CO., LTD.
No.12 Baotang Rd., Jinglian Vil., Qiaotou Town, Dongguan, China
TEL: +86-769-83438901
FAX: +86-769-83438905
- Website: www.baosg.com
- Email Address: business@baosg.com, sales@baosg.com

■ Supplier of quality furniture components



Baosheng has been providing quality furniture components for the past 15 years. We specialize in supplying quality aluminum components to the office furniture industry over the world.

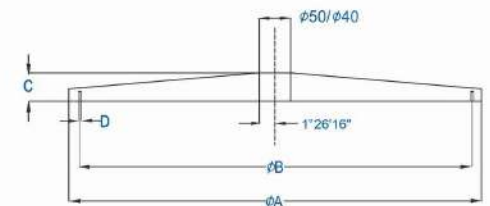
Our off-the-shelf aluminum bases meet market needs for aesthetics, performance and value. We use RoHS compliant material and our products pass BIFMA standards.

We also supply a number of aluminum custom-designed OEM products for our clients.

With our office / warehouse located in Tainan, Taiwan and the factory located in Dongguan, China. We are able to serve and support clients in all phases of the product development process including Engineering, Manufacturing, and Logistics Service.

AA-675 Aluminum Base

Polished
* AA-675FC



Description	∅ A (mm)	∅ B (mm)	C (mm)	D (mm)
AA-675	675	638	47.10	M5

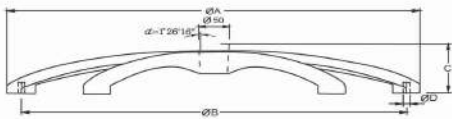
Other finishings including Powder coated/Painted, Brushed, Sandblasted, Chrome Plated are available.

AB-645.AB-700 Aluminum Base



Polished

- * AB-645FC
- * AB-700FC

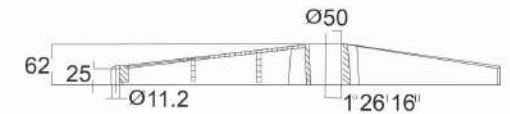


Description	Ø A (mm)	Ø B (mm)	C (mm)	Ø D (mm)
AB-645	ø 645	ø 600	84	ø 11.2
AB-700	ø 700	ø 655	95	ø 11.2

Other finishings including Powder coated/Painted, Brushed, Sandblasted, Chrome Plated are available.

AD-660 Aluminum Base

Polished
*AD-660FC

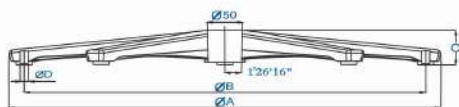


Other finishings including Powder coated/Painted, Brushed, Sandblasted, Chrome Plated are available.

AE-640 Aluminum Base



Polished
* AE-640FC



Description	Ø A (mm)	Ø B (mm)	C (mm)	Ø D (mm)
AE-640	Ø 640	Ø 600	60	Ø 11.2

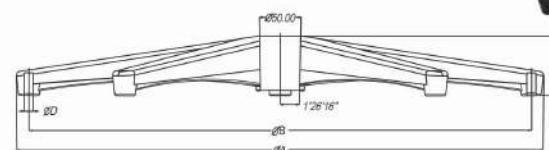
Other finishings including Powder coated/Painted, Brushed, Sandblasted, Chrome Plated are available.



AE-660 Aluminum Base



Polished
* AE-660FC



Description	Ø A (mm)	Ø B (mm)	C (mm)	Ø D (mm)
AE-660	Ø 660	Ø 630	60	Ø 11.2

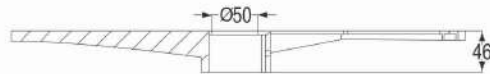
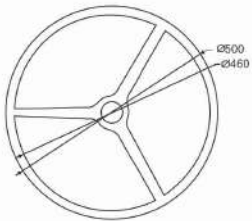
Other finishings including Powder coated/Painted, Brushed, Sandblasted, Chrome Plated are available.



AG-500 Aluminum Footring



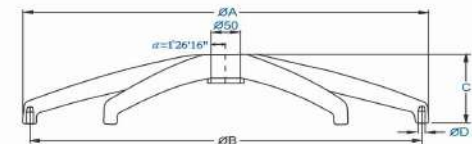
Top brushed/Bottom Painted
* AG-500



Other finishings including Powder coated/Painted, Brushed, Sandblasted, Chrome Plated are available.

AH-668 Aluminum Base

Polished
* AH-668FC



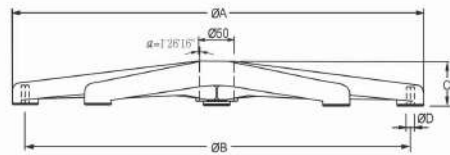
Description	Ø A (mm)	Ø B (mm)	C (mm)	Ø D (mm)
AH-668	Ø668	Ø646	140	Ø11.2

Other finishings including Powder coated/Painted, Brushed, Sandblasted, Chrome Plated are available.

AP-305 Aluminum Base



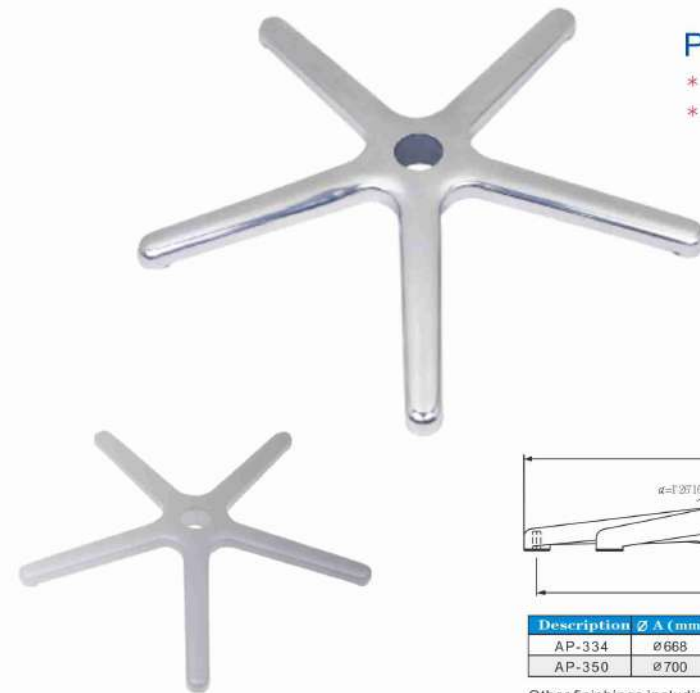
Polished
* AP-305FC



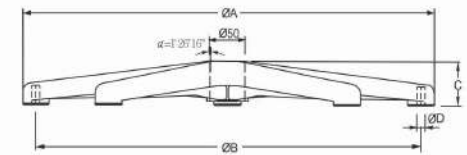
Description	Ø A (mm)	Ø B (mm)	C (mm)	Ø D (mm)
AP-305	Ø 610	Ø 572	55.5	Ø 11.2

Other finishings including Powder coated/Painted, Brushed, Sandblasted, Chrome Plated are available.

AP-334.AP-350 Aluminum Base



Polished
* AP-334FC
* AP-350FC



Description	Ø A (mm)	Ø B (mm)	C (mm)	Ø D (mm)
AP-334	Ø 668	Ø 630	56	Ø 11.2
AP-350	Ø 700	Ø 660	57.5	Ø 11.2

Other finishings including Powder coated/Painted, Brushed, Sandblasted, Chrome Plated are available.

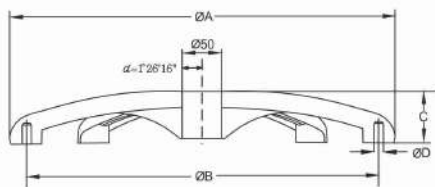
AS-500 Aluminum Base



Polished
* AS-500FC



Black Painted
* AS-500BK



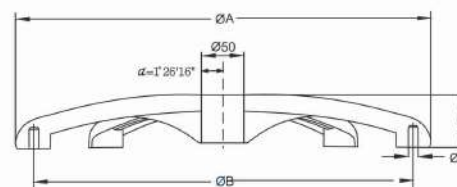
Description	$\varnothing A$ (mm)	$\varnothing B$ (mm)	C (mm)	$\varnothing D$ (mm)
AS-500	$\varnothing 500$	$\varnothing 460$	61	$\varnothing 11.2$

Other finishings including Powder coated/Painted, Brushed, Sandblasted, Chrome Plated are available.

AS-610 Aluminum Base



Polished
* AS-610FC



Description	$\varnothing A$ (mm)	$\varnothing B$ (mm)	C (mm)	$\varnothing D$ (mm)
AS-610	$\varnothing 610$	$\varnothing 568$	75	$\varnothing 11.2$

Other finishings including Powder coated/Painted, Brushed, Sandblasted, Chrome Plated are available.

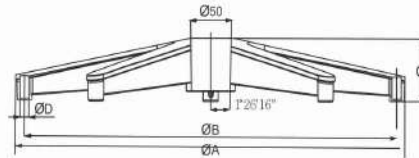


AT-500 Aluminum Base



Top Polished/Bottom Painted

* AT-500FC/BK



Description	Ø A (mm)	Ø B (mm)	C (mm)	Ø D (mm)
AT-500	Ø 500	Ø 478	65	Ø 11.2

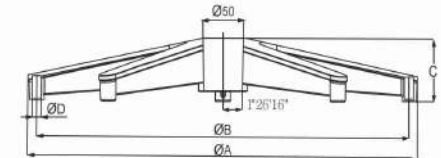
Other finishings including Powder coated/Painted, Brushed, Sandblasted, Chrome Plated are available.

AT-600 Aluminum Base



Top Polished/Bottom Painted

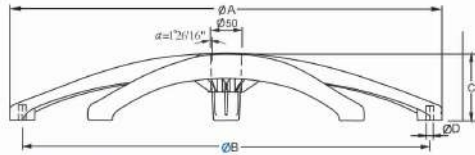
* AT-600FC/BK



Description	Ø A (mm)	Ø B (mm)	C (mm)	Ø D (mm)
AT-600	Ø 600	Ø 578	74	Ø 11.2

Other finishings including Powder coated/Painted, Brushed, Sandblasted, Chrome Plated are available.

AF-320.AF-350 Aluminum Base

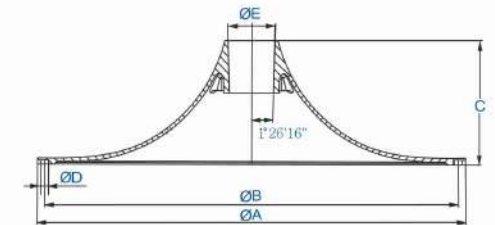


Description	Ø A (mm)	Ø B (mm)	C (mm)	Ø D (mm)
AF-320	ø640	ø602	96	ø11.2
AF-350	ø700	ø662	104	ø11.2

Other finishings including Powder coated/Painted, Brushed, Sandblasted, Chrome Plated are available.

- Polished
 * AF-320FC
 * AF-350FC

AR-420.AR-460 Aluminum Base Plate



Description	Ø A (mm)	Ø B (mm)	C (mm)	Ø D (mm)	E (mm)
AR-420	ø420	ø400	85	ø8	ø40
AR-460	ø460	ø444	133	ø8	ø50

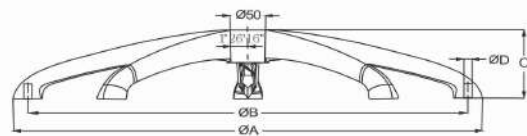
Other finishings including Powder coated/Painted, Brushed, Sandblasted, Chrome Plated are available.

Black Painted

- * AR-420BK
 * AR-460BK

AI-350 Aluminum Base

Polished
* AI-350FC



Description	Ø A (mm)	Ø B (mm)	C (mm)	Ø D (mm)
AI-350	Ø 700	Ø 650	114	Ø 11.2

Other finishings including Powder coated/Painted, Brushed, Sandblasted, Chrome Plated are available.

BM-75 Aluminum Block Mechanism

