



**VENUS PLASTIC**

金弘興

**EXCELLENCE IN BOBBIN**



[www.venusplas.com.tw](http://www.venusplas.com.tw)





金弘興

**SPECIAL DESIGN FOR PRODUCING HIGH QUALITY :**

- HDPE T-SHIRT BAGS
- LD/LLDPE SHOPPING BAGS
- HD, LD/LLDPE GARBAGE BAGS
- P.P. GARMENT BAGS
- LDPE ZIPPER BAGS
- LD/LLDPE LAMINATION FILM
- LD/LLDPE PRINTING FILM
- LD/LLDPE SHRINK FILM
- LD/LLDPE STRETCH HOOD
- LD/LLDPE STRETCH FILM
- LD/LLDPE RAW MATERIAL FFS BAGS
- LD/LLDPE/EVA AGRICULTURE FILM
- BIO-DEGRADABLE BAGS



**VN-CO55+55+55AA-1500-OS**

**HD,LD/LLDPE,EVA**

**3-LAYER CO-EXTRUSION**

**HIGH SPEED INFLATION MACHINE**

WITH VERTICAL TYPE

OSCILLATING TAKE-UP UNIT

**BASIC OPTIONAL DEVICES:**



**PRESSURE GAUGE & MELT INDEX GAUGE**



**MASTERBATCH FEEDER**



**MANUAL CALIBRATION CAGE**



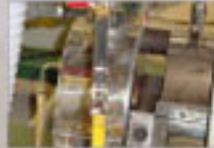
**CORONA (LOW CAPACITY) SURFACE TREATER**



**EMBOSSING ROLLER**



**AUTO HOPPER LOADER**



**MANUAL SCREEN CHANGER**



**MOTORIZED CALIBRATION CAGE**



**CORONA (HIGH CAPACITY) SURFACE TREATER**



**EDGE POSITION CONTROL (E.P.C.)**





**OS-VERTICAL TYPE**  
OSCILLATING TAKE-UP UNIT



**HO-HORIZONTAL TYPE**  
OSCILLATING TAKE-UP UNIT



**RD-ROTATING DIE DEVICE**



**VN-CO55+55+55AA-1500-HO**

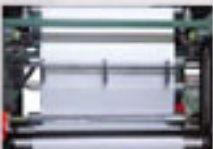
**HD,LD/LLDPE,EVA**

**3-LAYER CO-EXTRUSION**

**HIGH SPEED INFLATION MACHINE**

WITH HORIZONTAL TYPE

OSCILLATING TAKE-UP UNIT



**EDGE TRIM SLITTER**



**EDGE TRIM BLOWER**



**LOAD CELL**



**AUTO UNLOADING DEVICE**



**6" AIR SHAFT SLEEVE**



**SIDE OPEN KNIFE**



**EDGE TRIM WINDER**



**ELECTRIC  
TENSION CONTROL**



**3" AIR SHAFT**

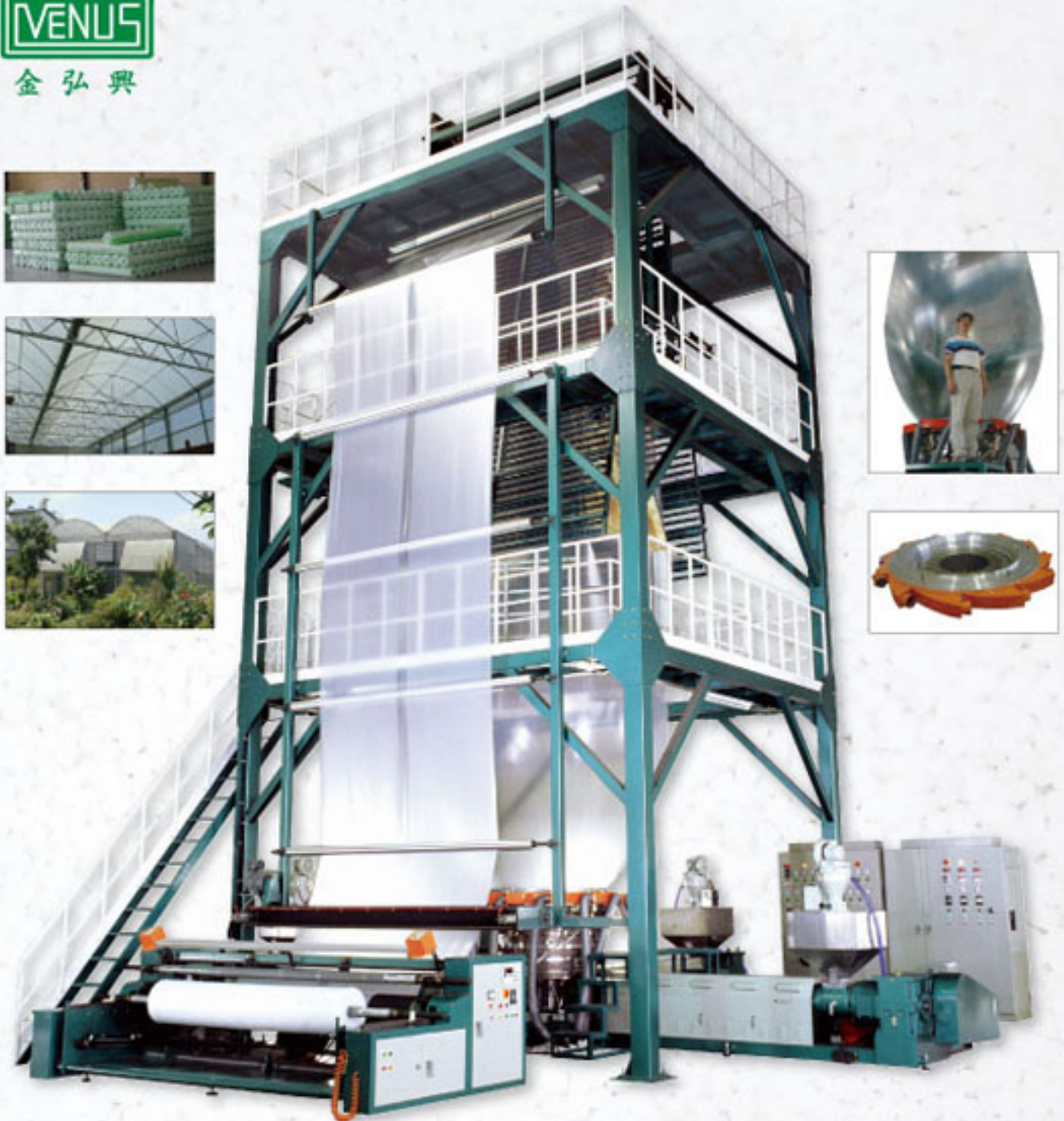


**AIR CHILLER**





金弘興



MAX. OPEN FILM WIDTH: 10,000mm  
MAX. FILM THICKNESS: 0.200mm  
DIA.OF 3-LAYER DIES: φ 1200mm

**VN-CO100+120+100A-3200**

**LD/LDPE, EVA 3-LAYER CO-EXTRUSION  
AGRICULTURE FILM  
HIGH SPEED INFLATION MACHINE**

**VENUS AUTOMATION OPTIONAL DEVICES:**



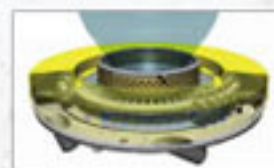
IBC SYSTEM



GRAVIMETRIC  
DOSING UNIT



THICKNESS  
MEASUREMENT UNIT



AUTO PROFILE  
CONTROL AIR IRNG



HMI CONTROL  
(TOUCH SCREEN)



## VN-DR-1A-T-SERIES

THREE IN ONE TYPE, DIE-FACE CUTTING  
WATER COOLING PLASTIC RECYCLING MACHINE WITH SHREDDER DRUM



## VN-DR-2-EF-SERIES

TWO-STAGE TYPE, DIE-FACE CUTTING  
WATER COOLING PLASTIC RECYCLING MACHINE

VN-DR105-1A-T1100



VN-DR100-2-EF

## VN-AR-1-SERIES

AIR COOLING TYPE



VN-AR65-1-M

## VN-DR-1A-HF-SERIES

ONE-STAGE TYPE, DIE-FACE CUTTING  
WATER COOLING PLASTIC RECYCLING MACHINE

## VN-WR-1-SERIES

WATER COOLING TYPE



VN-WR65-1



VN-DR100-1A-HF

## AR/WR/DR PLASTIC WASTE RECYCLING MACHINE

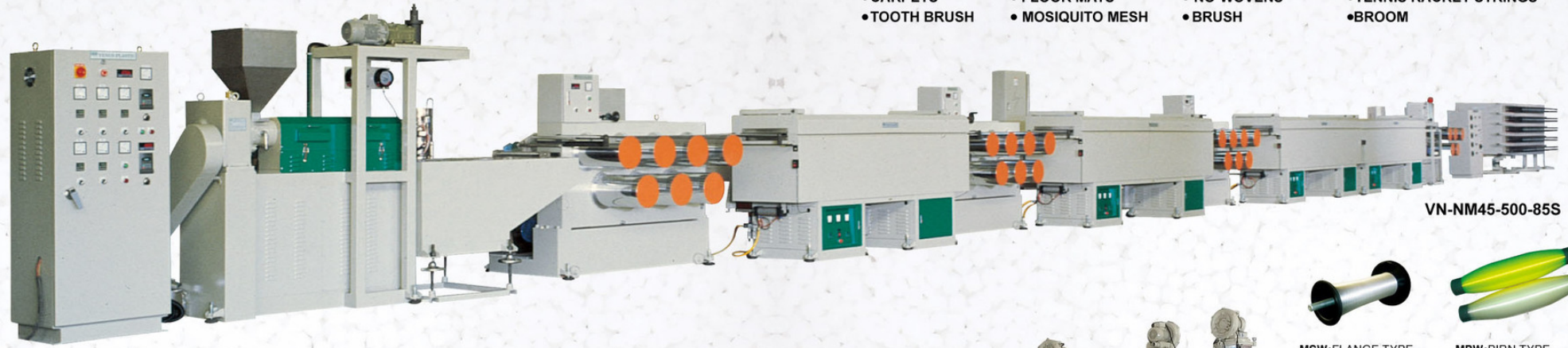
SCREW DIA.	φ65mm	φ85mm	φ100mm	φ120mm	φ150mm
MODEL NO.	AR65	AR85	AR100		
MAX. MACHINE OUTPUT (kg / hr)	75	120	200		
MODEL NO.	WR65	WR85	WR100	WR120	WR150
MAX. MACHINE OUTPUT (kg / hr)	95	200	280	350	500
MODEL NO.	DR65	DR85	DR100	DR120	DR150
MAX. MACHINE OUTPUT (kg / hr)	110	250	320	400	600



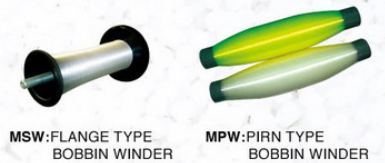
- **VN-MF-SERIES** PP/PE MONOFILAMENT MAKING MACHINE
- **VN-NM-SERIES** NYLON MONOFILAMENT MAKING MACHINE
- **VN-PM-SERIES** POLYESTER MONOFILAMENT MAKING MACHINE

**SPECIAL DESIGN FOR PRODUCING HIGH QUALITY:**

- ROPES
- SEWING THREAD
- CARPETS
- TOOTH BRUSH
- NETTING
- ZIPPER FASTENERS
- FLOOR MATS
- MOSIQUITO MESH
- AWNING CLOTH
- INDUSTRIAL FABRIC
- NO-WOVENS
- BRUSH
- FISHING LINES
- BRISTLES
- TENNIS RACKET STRINGS
- BROOM



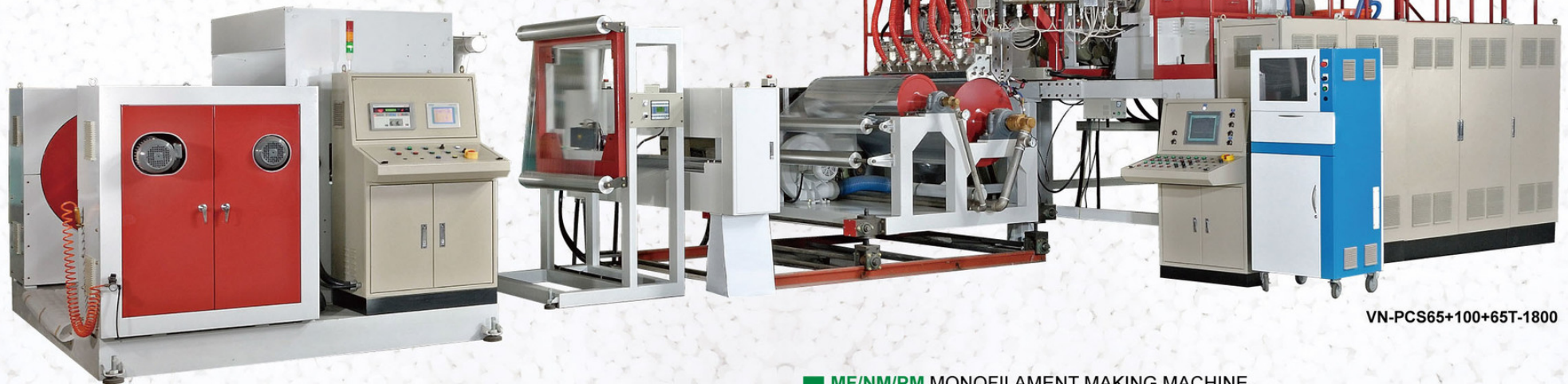
VN-NM45-500-85S



MSW: FLANGE TYPE BOBBIN WINDER

MPW: PIRN TYPE BOBBIN WINDER

- **VN-PCS-SERIES** MULTI-LAYER T-DIE CAST FILM EXTRUSION LINE FOR STRETCH WRAPING FILM
- **VN-PCP-SERIES** MULTI-LAYER T-DIE CAST FILM EXTRUSION LINE FOR CPP FILM



VN-PCS65+100+65T-1800

■ **PCS/PCP MULTI-LAYER T-DIE CAST FILM EXTRUSION LINE**

MODEL NO.	PCS50+85+50	PCS65+100+65	PCS75+120+75
SCREW DIA. (φmm)	φ50 x 2 + φ85 x 1	φ65 x 2 + φ100 x 1	φ75 x 2 + φ120 x 1
MAX. EXTRUSION OUTPUT (kg / hr)	250	400	500
MAX. MACHINE OUTPUT (kg / hr)	*150 - **200	*225 - **320	*300 - **400
PRODUCTION (WORKING) OUTPUT	DEPENDS ON FILM SIZES & RAW MATERIAL PROPERTIES		
EFFECTIVE LAYFLAT WIDTH (mm)	500 x 2	500 x 3	500 x 4

\*STRETCH WRAPING FILM MAX. MACHINE OUTPUT \*\* CPP FILM MAX. MACHINE OUTPUT

■ **MF/NM/PM MONOFILAMENT MAKING MACHINE**

SCREW DIA.	φ45mm	φ55mm	φ65mm	φ75mm	φ90mm
PP/PE MONOFILAMENT : 0.1-1mm	MF45	MF55	MF65	MF75	MF90
OUTPUT(kg/hr) / NO. OF SPINDLES	35 / 65 x 1	45 / 85 x 1	65 / 65 x 2	80 / 95 x 2	120 / 105 x 3
NYLON MONOFILAMENT : 0.1-2mm	NM45	NM55	NM65	NM80	
OUTPUT(kg/hr) / NO. OF SPINDLES	25 / 65 x 1	40 / 85 x 1	55 / 65 x 2	80 / 85 x 2	
POLYESTER MONOFILAMENT : 0.3-1.1mm			PM65		
OUTPUT(kg/hr) / NO. OF SPINDLES			30-45 / 32		





金弘興

**VN-HH-SERIES**  
HDPE HIGH SPEED INFLATION MACHINE



**VN-HH75A-1300-RD**



**VN-HH55A-750**

**VN-HM-SERIES**  
HDPE MINI TYPE INFLATION MACHINE



**VN-HM45B-600**



**VN-HM45B-600-IW**

**VN-HH+LS2-SERIES**  
HDPE HIGH SPEED INFLATION MACHINE,  
WITH 2-COLOR IN-LINE PRINTER



**VN-HH55A-750+LS2-800**

**HDPE HIGH SPEED INFLATION MACHINE**

MODEL NO.	HM45 / HH45	HH50	HH55	HH65	HH75	HH85	HH100
SCREW DIA.	φ 45 mm	φ 50 mm	φ 55 mm	φ 65 mm	φ 75 mm	φ 85 mm	φ 100 mm
MAX - EXTRUSION OUTPUT (kg / hr)	40	60	75	110	160	200	250
MAX - MACHINE OUTPUT (kg / hr)	32-35	45-50	60-65	80-90	120-130	150-160	190-200
PRODUCTION (WORKING) OUTPUT	DEPENDS ON FILM SIZES & RAW MATERIAL PROPERTIES						
EFFECTIVE LAYFLAT WIDTH (mm)	250-450	300-600	300-700	400-900	600-1200	800-1400	1000-1600



## VN-LH-SERIES

LD/LLDPE HIGH SPEED INFLATION MACHINE



VN-LH75AA-1500-RD

## VN-LM-SERIES

LD/LLDPE MINI TYPE INFLATION MACHINE



VN-LM45B-600

## VN-LTH-SERIES

LD/LLDPE TWIN-HEAD HIGH SPEED INFLATION MACHINE



VN-LTH55B-500



VN-LH75AA-1300-HO

## LD/LLDPE HIGH SPEED INFLATION MACHINE

LM45 / LH45	LH50	LH55	LH65	LH75	LH85	LH100	LH120	LH150
φ 45 mm	φ 50 mm	φ 55 mm	φ 65 mm	φ 75 mm	φ 85 mm	φ 100 mm	φ 120 mm	φ 150 mm
60	80	100	150	180	240	320	420	600
45-50	60-65	75-80	110-120	140-150	180-190	240-260	320-340	460-480
DEPENDS ON FILM SIZES & RAW MATERIAL PROPERTIES								
250-450	350-600	500-800	600-1000	700-1300	1200-2000	1700-2600	2000-3000	2500-4000





金弘興

### VN-HT-SERIES

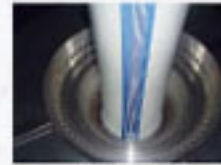
HDPE TWO COLOR HIGH SPEED INFLATION MACHINE



VN-HT45



VN-CO50+35



VN-CO50+35



VN-BW45



VN-HT45A-750



VN-HT45B-750



■ HDPE TWO-COLOR HIGH SPEED INFLATION MACHINE(VN-HT45,VN-HT50)

■ LD/LLDPE TWO-COLOR SIDE STRIPE HIGH SPEED INFLATION MACHINE(VN-CO50+35)

■ LD/LLDPE BLACK & WHITE HIGH SPEED INFLATION MACHINE(VN-BW45)

MODEL NO.	HT45	HT50	CO50+35	CO45+45/BW45
SCREW DIA.	φ 45mm x 2	φ 50mm x 2	φ 50mm + φ 35mm	φ 45mm + φ 45mm
MAX. EXTRUSION OUTPUT (kg / hr)	*80	*110	*80 / **100	*80 / **110
MAX. MACHINE OUTPUT (kg / hr)	*60	*90	*60 / **80	*60 / **90
PRODUCTION (WORKING) OUTPUT	DEPENDS ON FILM SIZES & RAW MATERIAL PROPERTIES			
EFFECTIVE LAYFLAT WIDTH (mm)	200-700	300-850	200-700	200-700

\* HDPE MAX. MACHINE OUTPUT, \*\*LD/LLDPE MAX. MACHINE OUTPUT.



## VN-PH-SERIES

P.P. HIGH SPEED INFLATION MACHINE



VN-PH45T-500-RD



VN-PH55DD-700-RD-SF



VN-PH55DD-700-RD



SIZING RING

## P.P. HIGH SPEED INFLATION MACHINE

MODEL NO.	PH45	PH55	PH65	PH75	PH90
SCREW DIA.	φ 45mm	φ 55mm	φ 65mm	φ 75mm	φ 90mm
MAX • EXTRUSION OUTPUT (kg / hr)	40	60	75	90	120
MAX • MACHINE OUTPUT (kg / hr)	30	50	65	75	100
PRODUCTION (WORKING) OUTPUT	DEPENDS ON FILM SIZES & RAW MATERIAL PROPERTIES				
EFFECTIVE LAYFLAT WIDTH (mm)	75-350	150-550	200-700	300-900	600-1050



## VN-CO-SERIES

### 2-LAYER CO-EXTRUSION HIGH SPEED INFLATION MACHINE



VN-CO55+55BB-1300-RD



VN-CO55+55AA-1300-RD



VN-CO55+55A-1300-OS

CO45+45	CO50+50	CO55+55	CO65+65	CO75+75	CO85+85	CO100+100
φ 45mm x 2	φ 50mm x 2	φ 55mm x 2	φ 65mm x 2	φ 75mm x 2	φ 85mm x 2	φ 100mm x 2
80 - 110	110 - 160	135 - 180	200 - 270	280 - 320	360 - 430	450 - 580
*60 - **90	*90 - **130	*110 - **150	*160 - **220	*220 - **260	*280 - **340	*360 - **460
DEPENDS ON FILM SIZES & RAW MATERIAL PROPERTIES						
350-600	500-800	600-1000	700-1300	1200-2000	1700-2600	2000-3000

### 3-LAYER CO-EXTRUSION HIGH SPEED INFLATION MACHINE



VN-CO55+55+55AA-1500-OS



VN-CO55+55+55AA-1500-HO



VN-CO100+120+100AA-3200

CO45+45+45	CO50+50+50	CO55+55+55	CO65+65+65	CO75+75+75	CO85+85+85	CO100+100+100
φ 45mm x 3	φ 50mm x 3	φ 55mm x 3	φ 65mm x 3	φ 75mm x 3	φ 85mm x 3	φ 100mm x 3
100 - 140	140 - 190	180 - 240	260 - 360	380 - 430	480 - 580	600 - 760
80 - **110	*110 - **150	*140 - **190	*200 - **280	*300 - **340	*380 - **460	*480 - **600
DEPENDS ON FILM SIZES & RAW MATERIAL PROPERTIES						
500-800	600-1000	700-1300	1200-2000	1700-2600	2000-3000	2500-4000

\* HDPE MAX. MACHINE OUTPUT, \*\* LD/LLDPE MAX. MACHINE OUTPUT.

- Production output = Film Width x 2 x Thickness x Density x Line Speed x 60 / 1000  
(kg/hr) = (mm) x (mm) x (g/cm<sup>3</sup>) x (m/min) x (min/hr) / (g/kg)
- The max. machine output is around 80% of extrusion output.
- The estimated production output depends on film sizes & MI.
- The EFFECTIVE LAYFLAT WIDTH depends on film application and around ±20% of the above mentioned specifications.
- Our company reserves the right to update the above specifications and not obliged to advise.



金弘興

**VENUS PLASTIC MACHINERY CO., LTD.**  
 金弘興塑膠機械股份有限公司  
 NO. 7, GUNGYE 1ST RD., SHINGNAN TSUEN,  
 MING SHUNG SHIAN, CHIA-YI HSIEN, TAIWAN.

台灣省嘉義縣民雄鄉興南村工業一路7號  
 TEL:886-5-220 5511 FAX:886-5-220 6611  
 E-mail:venuspla@ms46.hinet.net  
 Website:www.venusplas.com.tw