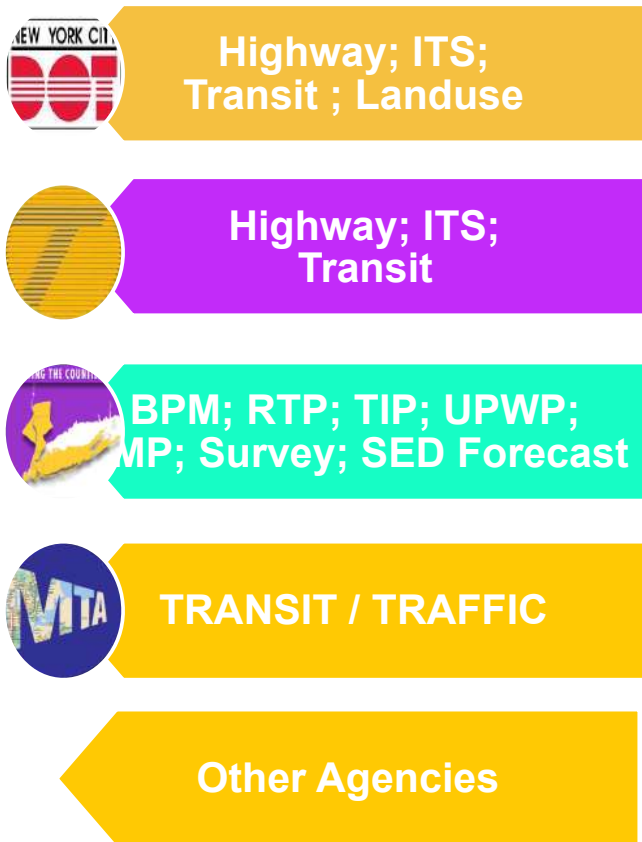
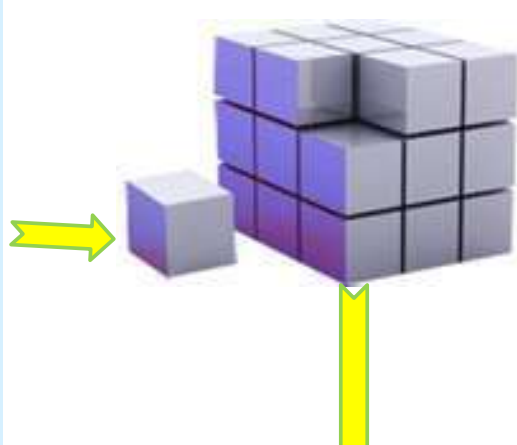


Data Discovery

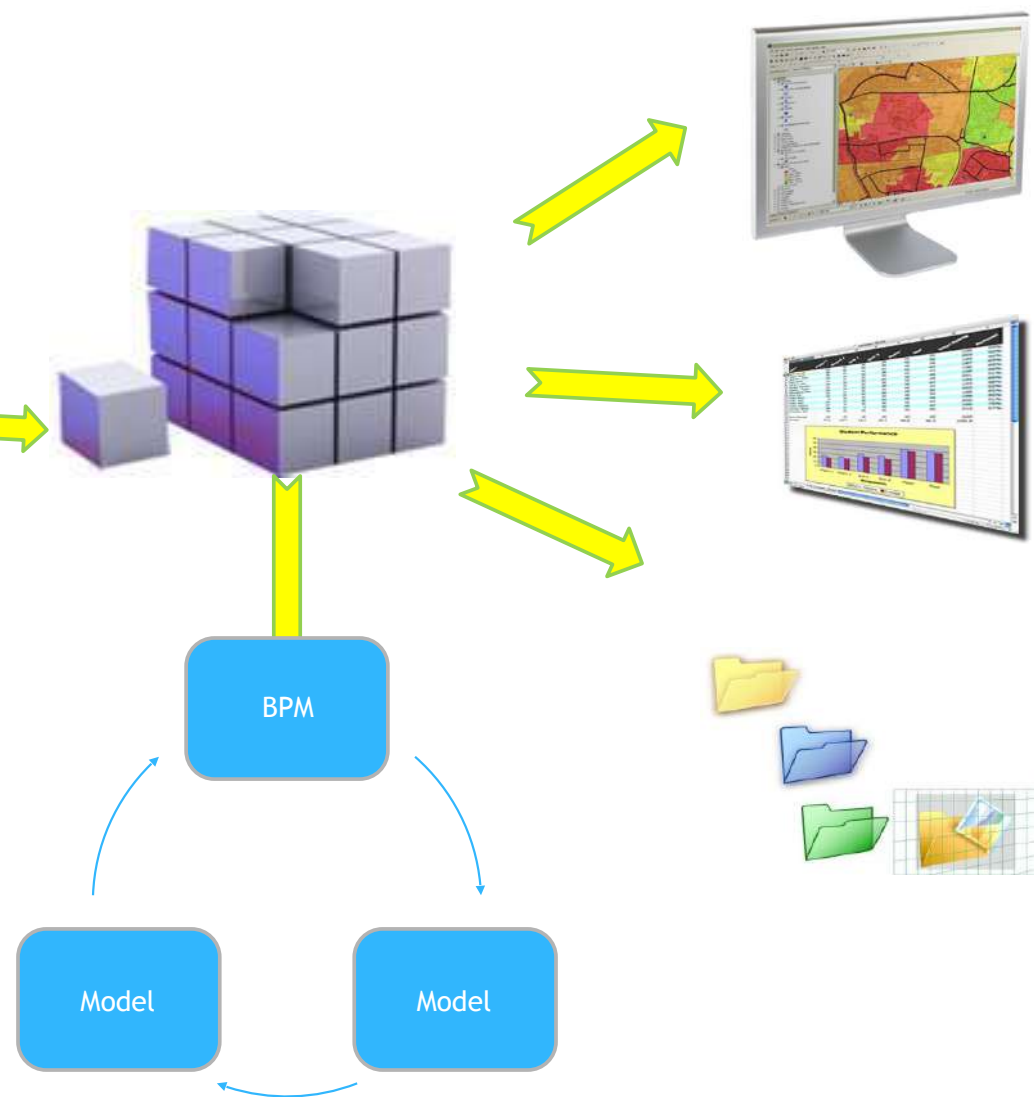


Data Conversion

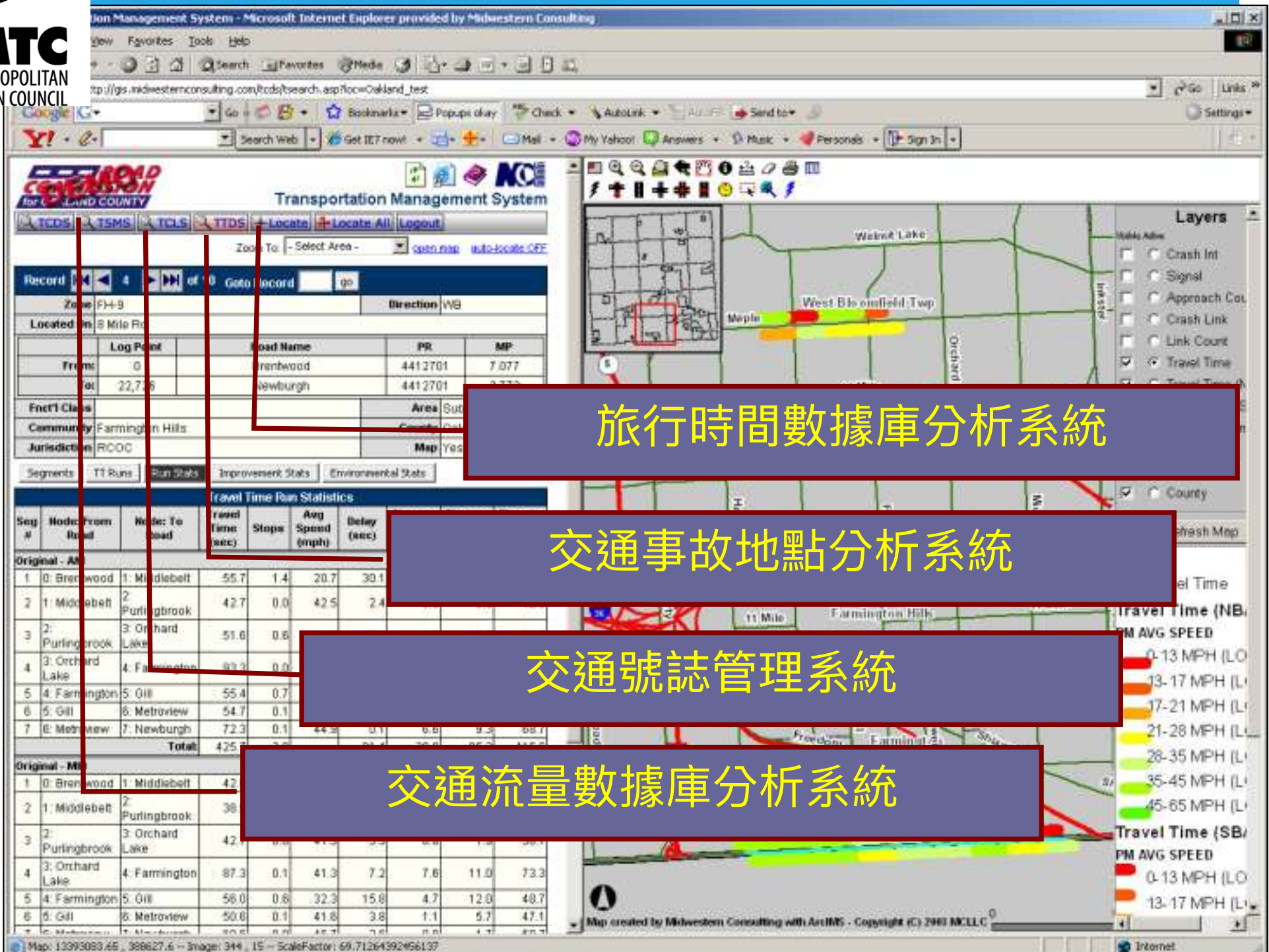
Warehouse Development



Applications Development



紐約的交通數據整合應用



Transportation Management System

Record 4 of 0

Zone	Direction
FH-9	WB

Log Point	Load Name	PR	MP
0	Brenwood	4412701	7.077
22,736	Newburgh	4412701	3.770

Seg #	Node From	Node To	Travel Time (sec)	Stops	Avg Speed (mph)	Delay (sec)
1	0: Brenwood	1: Middlebelt	55.7	1.4	20.7	30.1
2	1: Middlebelt	2: Purlingbrook	42.7	0.0	42.5	2.4
3	2: Purlingbrook	3: Orchard Lake	51.6	0.6		
4	3: Orchard Lake	4: Farmington	87.3	0.0		
5	4: Farmington	5: Gill	55.4	0.7		
6	5: Gill	6: Metroview	54.7	0.1		
7	6: Metroview	7: Newburgh	72.3	0.1	44.3	6.0
Total			425.7			

Map created by Midwestern Consulting with ArcIMS - Copyright (C) 2003 NCLLC

旅行時間數據庫分析系統

交通事故地點分析系統

交通號誌管理系統

交通流量數據庫分析系統



紐約的交通數據整合應用

New York MTC

NYMTC Traffic Count Database System (TCDS)

Refresh Bookmark Help

Home TSMS TCLS TTDS PMS PMDS RSMS PCDS PMMS WOTS RTTV

Login + Locate + Locate All

open map auto-locate OFF

交通流量數據庫分析系統

List View All DIRs

Record 1 of 39 Goto Record go

Location ID 23	MPO ID
Type SPOT	HPMS ID
Group	Route Type
Funct'l Class	Route
Located On EXTERIOR STREET	
NEAR 150TH ST	
County Manhattan	Direction 2-WAY
Community Manhattan	Lanes
Jurisdiction New York MTC	Surface Type
Category	Latitude 40.820532
	Longitude -73.930800

AADT							
Year	AADT	DHV-30	K %	D %	PA	BC	Graph
1998	6,087						

VOLUME COUNT			
Date	Int	24-Hr Total	Graph
Mon 8/1/1998	60	6,933	

VOLUME TREND	
Year	Annual Growth

SPEED				
Date	Int	Pace	85th	Total

CLASSIFICATION		
Date	Int	Total

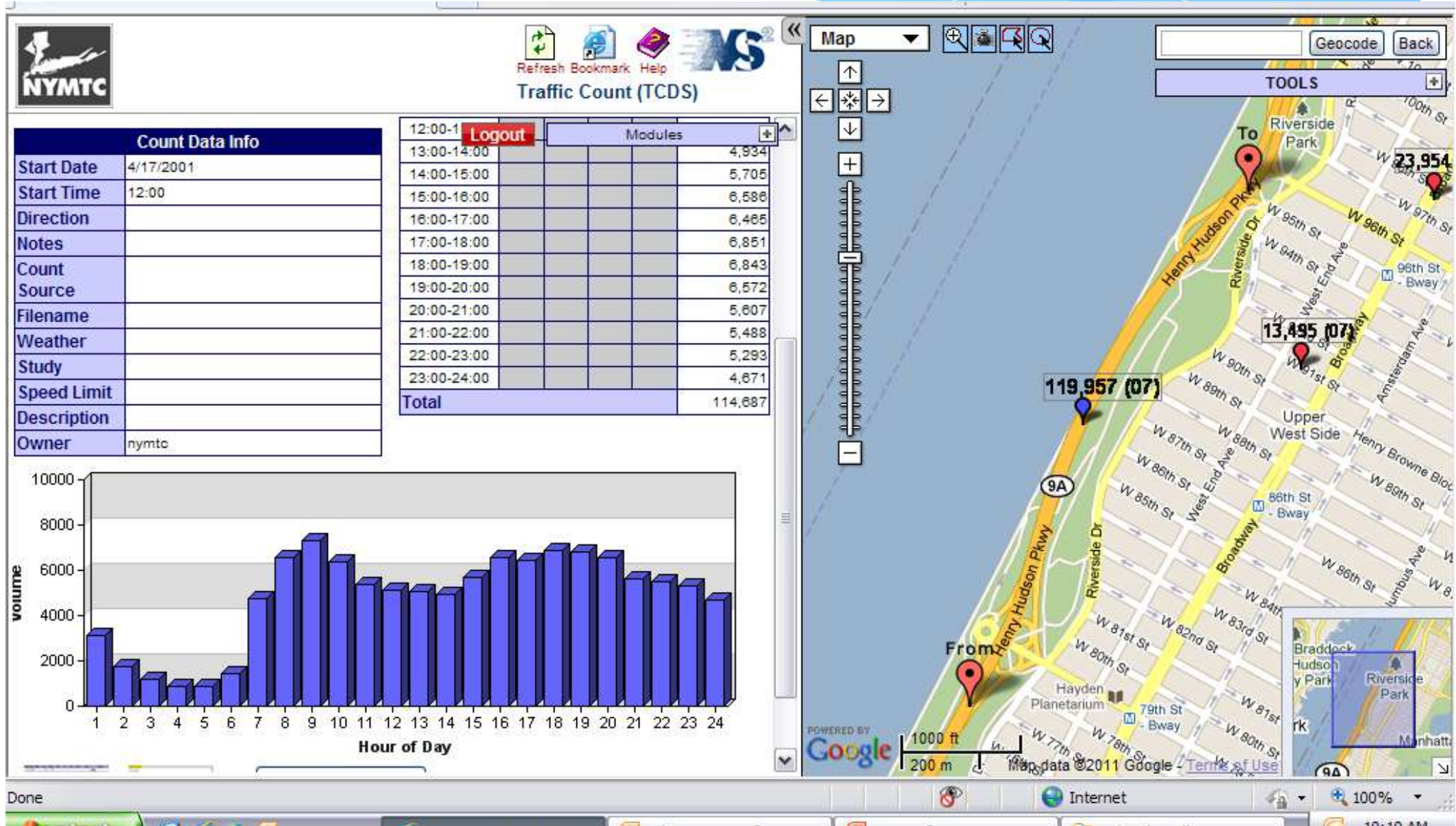
PARTIAL COUNT		
Date	Int	24-Hr Total

GAP		
Date	Int	Total

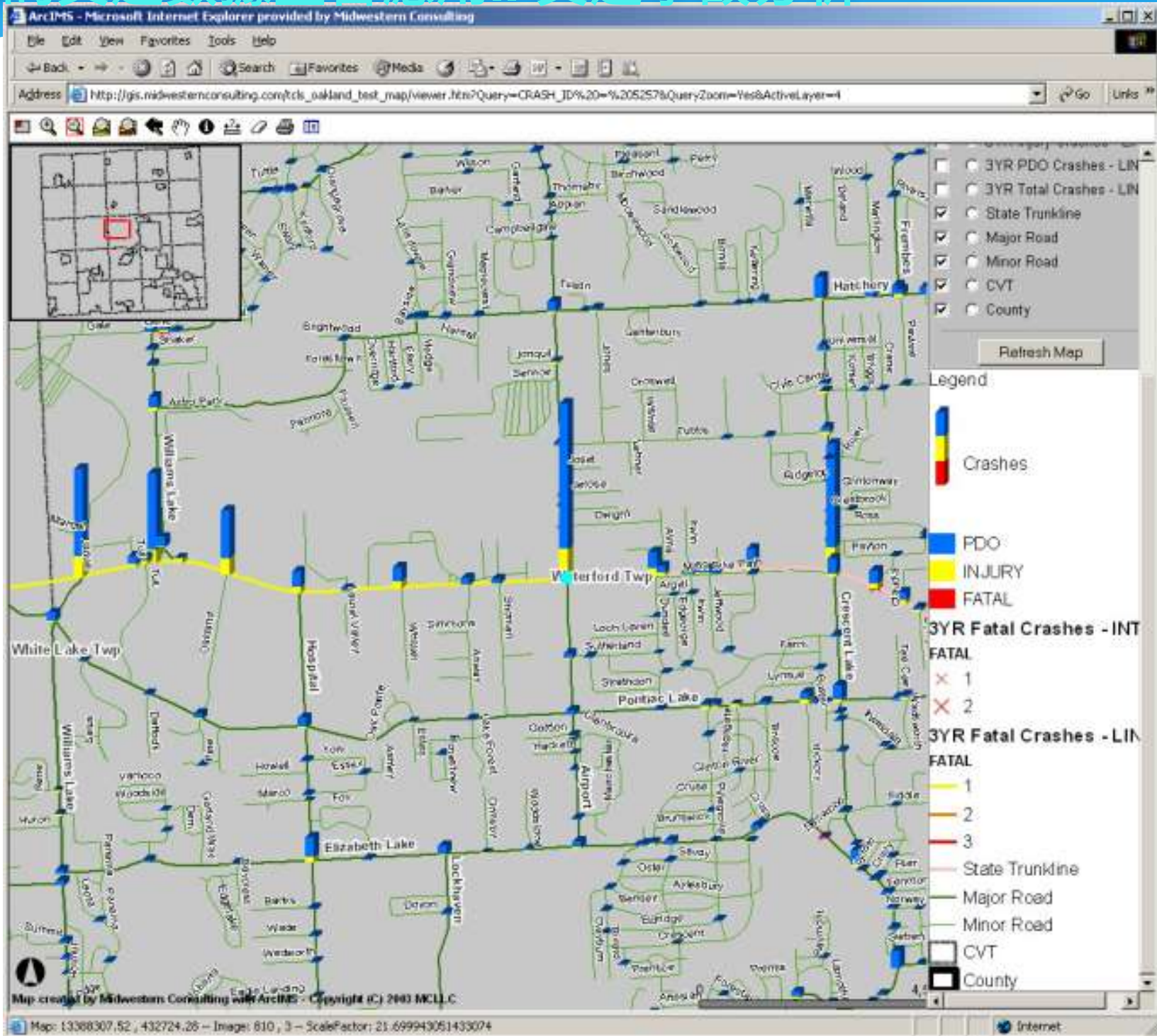
ARCHIVED COUNTS	
Date	File



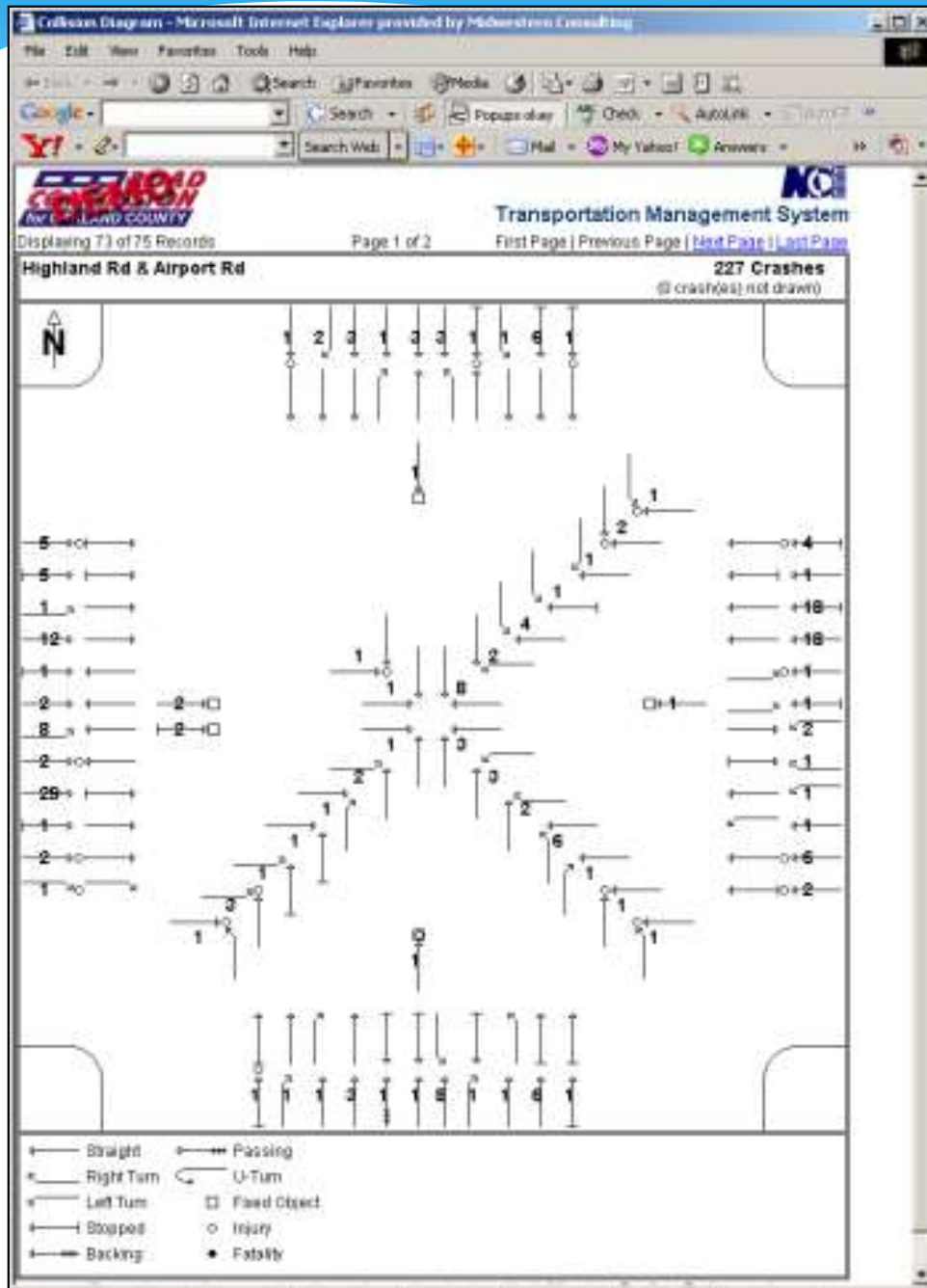
紐約的交通數據整合應用.. 交通流量分析



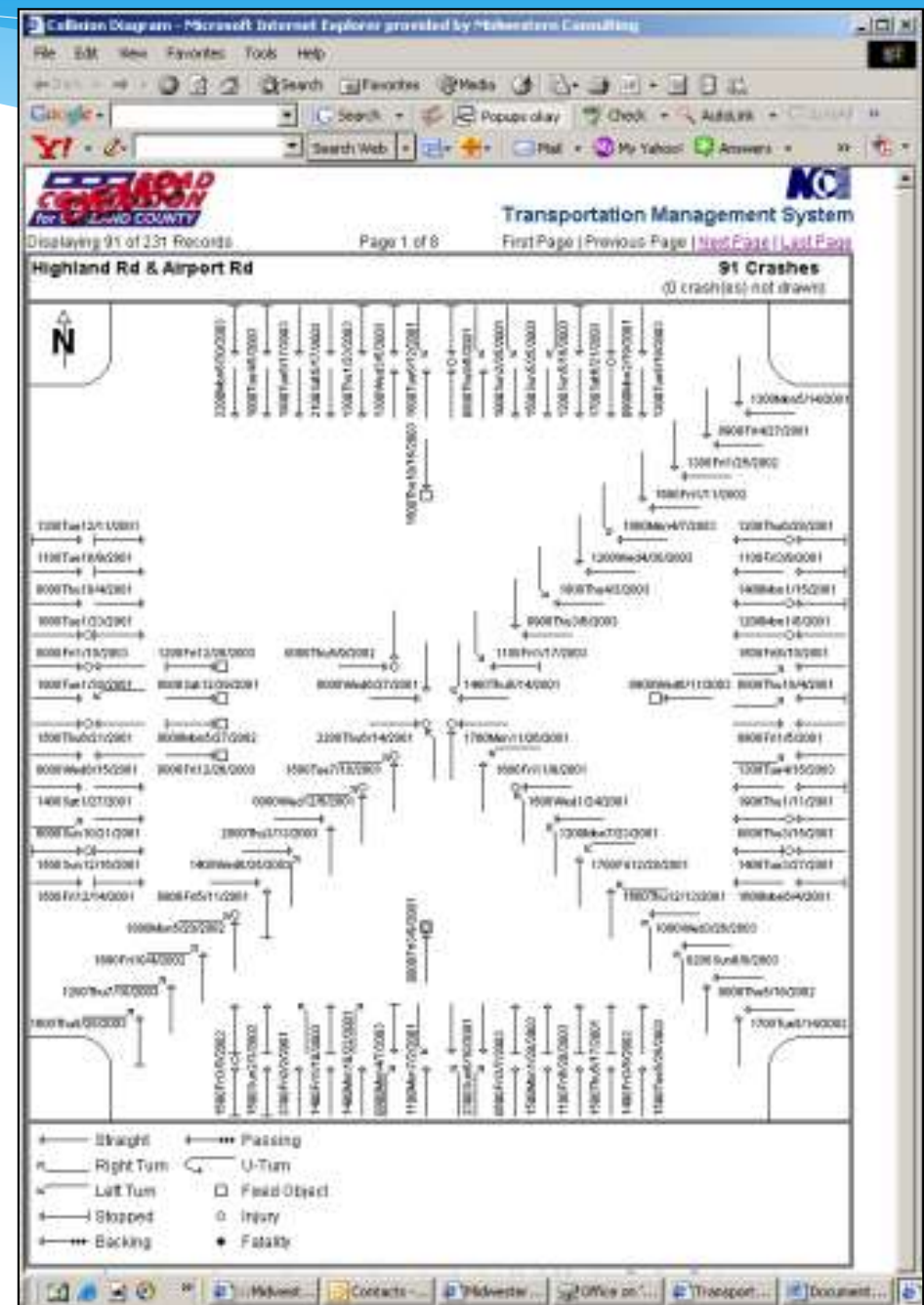
紐約的交通數據整合應用.. 交通事故分析



紐約的交通數據整合應用.. 交通事故分析



Collision Diagram (Summary)



Collision Diagram (Details)

紐約的交通數據整合應用.. 旅行時間分析

